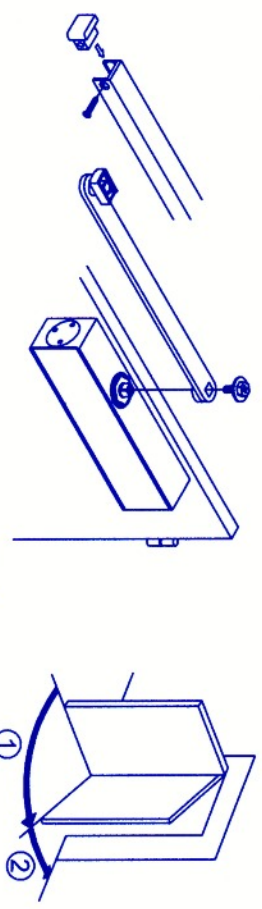
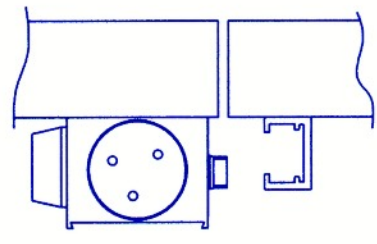
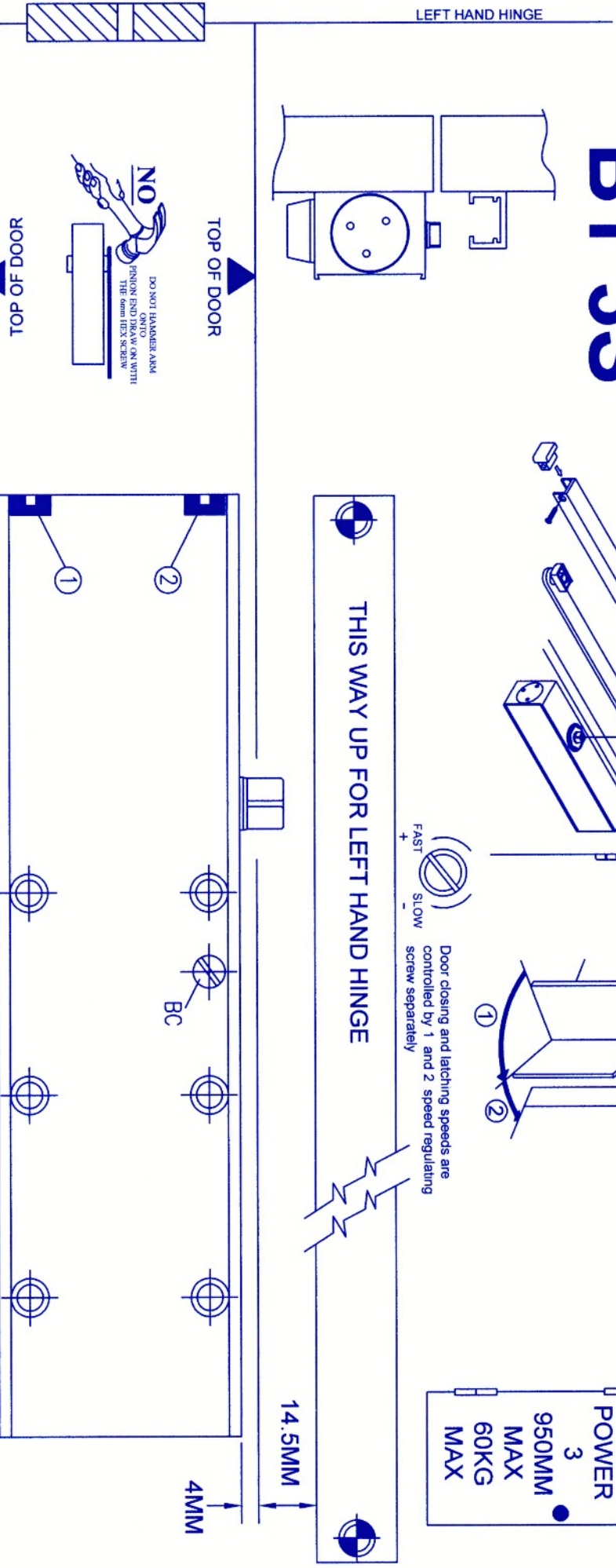
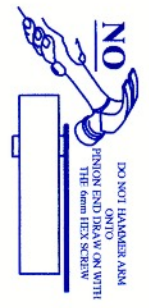
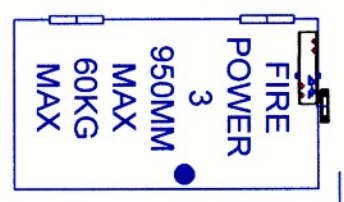


BT 3S



Door closing and latching speeds are controlled by 1 and 2 speed regulating screw separately

FAST +
SLOW -



FIXING INSTRUCTIONS (FIG.1.)

PLEASE READ CAREFULLY BEFORE ASSEMBLY & FIXING

- 1 Using the template, drill holes and screw on the door closer body. Centre line of pinion should be 192mm from the door hinge
- 2 At this point slide the plastic slider on the arm into the slide track channel
- 3 Using the template, drill one hole and screw on the slide track using the other hole as a guide. Remember to fit end blocks and End of track should be 117mm from the door hinge and 18 5mm from the top of the closer body to the bottom of the track
- 4 Using a 12mm open ended spanner on the bottom end of the pinion turn it slightly to match the square on the pinion to the square on the arm, press arm on to the pinion
- 5 Open the door a small amount to enable the arm to be bolted on to the closer using the special 6mm bolt
- 6 Set door and latching speed

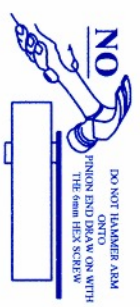
When adjusting speed and latch do not unscrew from fully closed more than 1 1/2 turns
MAINTENANCE Periodically apply light oil to the arm joints and check all screws are tight

BACKCHECK (OPTIONAL)

Backcheck is a device built into the door closer which applies a hydraulic brake during the opening cycle to check the movement of the door beyond 90°
 Tightening BC control screw will strengthen the braking effect. Unscrewing the BC control screw will weaken the braking effect, if unscrewed by 1 1/2 turns from closed it will turn the backcheck facility off

CE ARROW/ARCHITECTURAL
 Tything Road
 Alcester
 B496ES
 EN154 / A1 2002
 1121 ADD0021 38311113

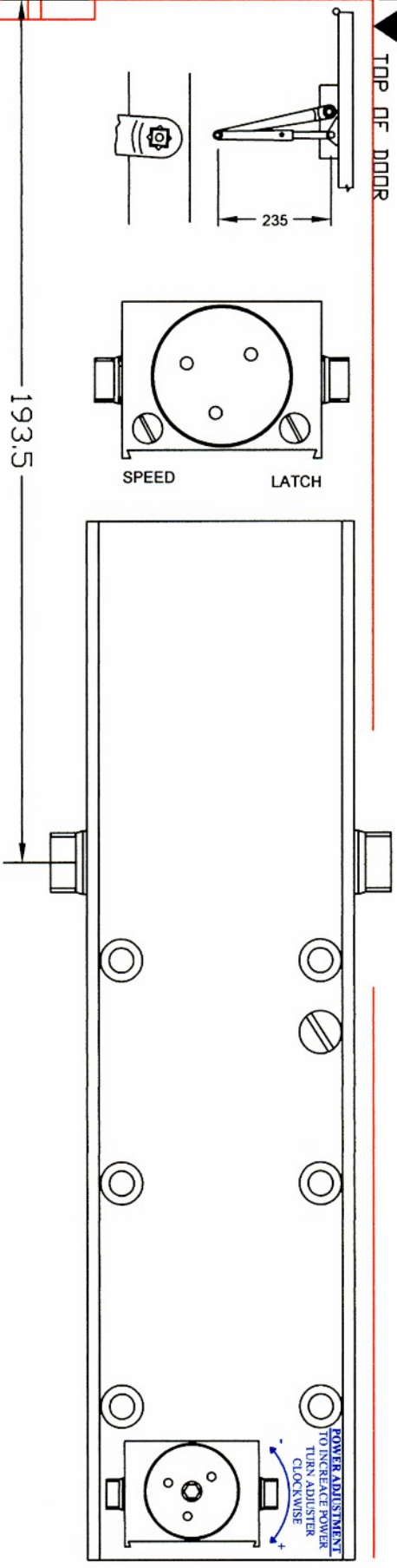
BT 24V



244

TOP OF DOOR

LEFT HAND HINGE



FITTING INSTRUCTIONS

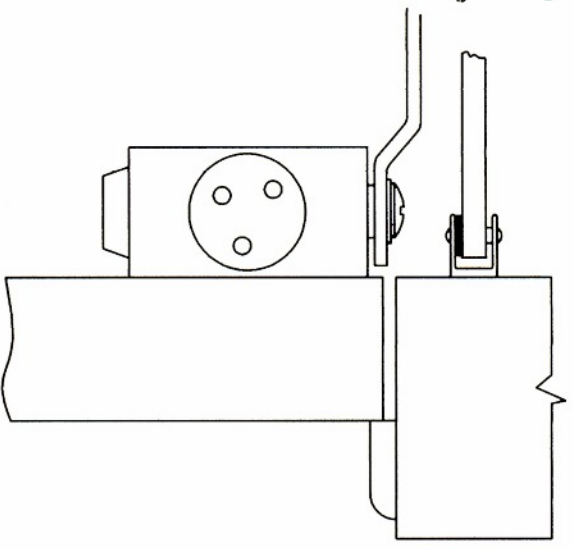
PLEASE READ CAREFULLY BEFORE ASSEMBLY & FIXING

- 1 Using the template, drill 2 pilot holes for the arm bracket
 - 2 Still using the template pilot drill 6 holes for the closer body. attach the closer body to the door using the screws supplied
 - 3 Fit arm to the closer. (position shown in the diagram) using the flat washer, lock washer followed by the arm screw. As shown in the diagram the length of the adjustable arm should be 235mm from pivot to pivot
 - 4 Screw the arm bracket to the door frame where you have pre-drilled using the screws supplied
 - 5 Set door and latching speed
 - 6a (Trim plate version) Fit the small rubber insert into one of the fixing holes. then slide the trim plate along the body
 - 6b (cover version) Place cover over door closer body. secure cover to body using the 2 screws supplied
 - 7 Fit pinion cap
- MAINTENANCE** Periodically apply light oil to the arm knuckle joint and check all screws are tight

SPECIFICATIONS

BS EN 1154 recommends that the minimum power size 3 closers are fitted to fire/smoke door assemblies and that mechanical hold open devices should not be used
Using the above regular arm template/dimensions, these door closers are designed to give 150° opening at their rated performance

CLOSING FORCE TO BS EN 1154	MAX WIDTH	DOOR MASS
2	850MM	40
3	950MM	60
4	1100MM	80



CE ARROW ARCHITECTURAL
Tything Road
Alcester
B496ES

EN1154 1996- A1 2002

1121-CPD-AD0069

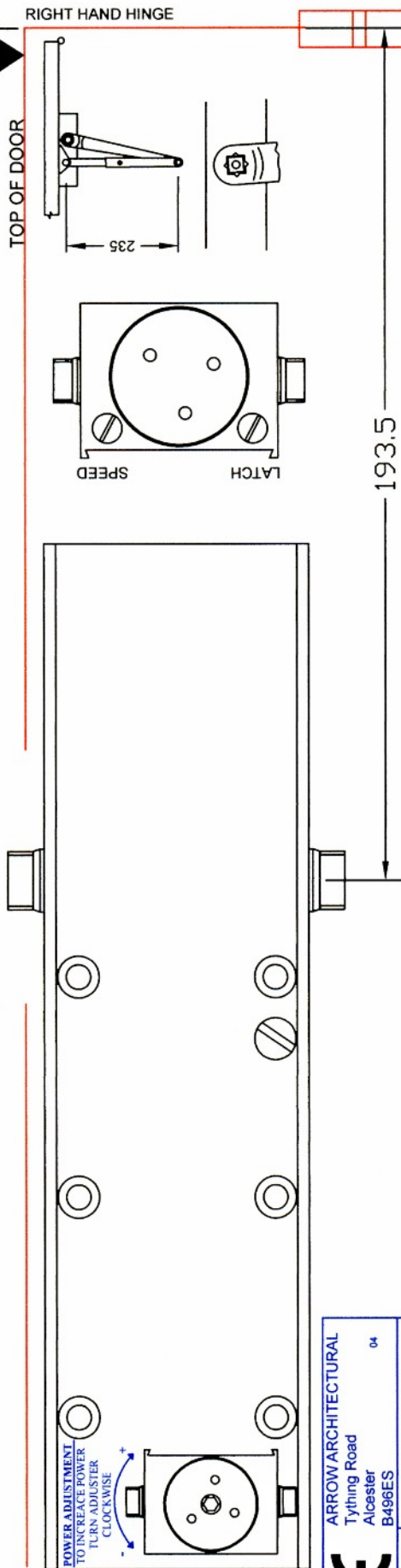
38111113

04

BT 24V



244



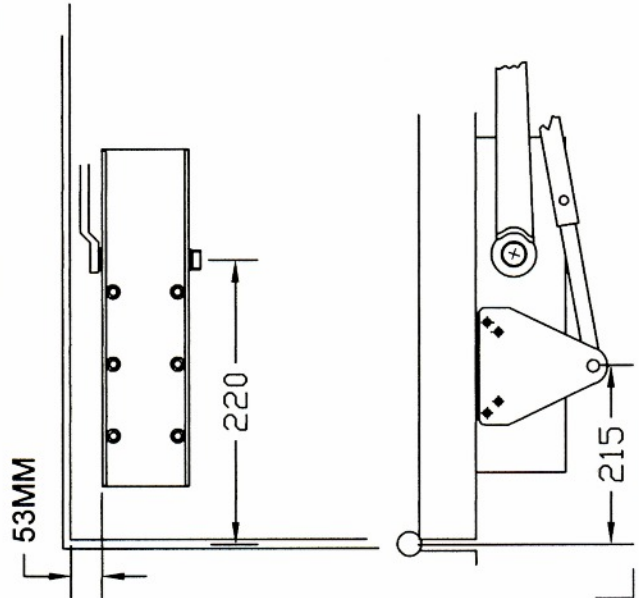
POWER ADJUSTMENT
TO INCREASE POWER
TURN ADJUSTER
CLOCKWISE

CE ARROW ARCHITECTURAL
Tything Road
Alcester
B496ES

1121-CPD-AD0059 EN1154:1996+ A1:2002

3811113

PARALLEL FITTING



- 1 Mark the position of the closer and the soffit plate as shown in the diagrams and pilot drill Hinge to pinion 220mm Hinge to soffit plate 215mm(Use the body and soffit plate as a template)
- 2 Secure the arm to the pinion on the closer body(position shown in the diagrams)using the arm screw and washers
- 3 Close both the adjuster screws off(this will allow you time to fit the closer to the door),rotate the arm in a clockwise direction to approximately 90° to the body
- 4 Secure the closer body to the door using the 6 screws supplied
- 5 Adjust the length of the arm to 245mm from pivot to pivot
- 6 Screw the soffit plate to the transom using the 4 screws supplied
- 7 Attach the arm to the soffit plate and secure it using the screw and washer supplied
- 8 Make sure the main arm is parallel to the door face
- 9 Adjust closing and latching speed
- 10 Before sliding on the fascia plate insert the rubber bung into one of the fixing holes this will hold it in place Finally fit the pinion cover

LEFT HAND HINGE

RIGHT HAND HINGE



ARM POSITION AT REST
BEFORE FITTING ONTO THE
DOOR



ARM POSITION AT REST
BEFORE FITTING ONTO THE
DOOR